



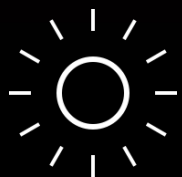
VE PLUS **FIFISH PRO**

ENTERPRISE SMART
UNDERWATER ROBOT

More powerful, easier to operate



FIFISH PRO V6 PLUS is an expert in underwater advanced solutions. Diving up to **150 meter**, V6 Plus adopts the new patented **Q-Motor stabilization system**, a newly upgraded underwater intelligent system, **anti-collision system**, and an automatic fixed-range sonar system that can fix the distance from target. This function obviously reduces the complexity of operation. With the help of optional **underwater quick positioning system**, you can track and locate the ROV's position underwater at any time. Integrated VR intelligent technology offers immersive control. V6 PLUS achieves semi-automatic operation and has strong compatibility. It can load a variety of functions. More powerful in functions and simple in operation, FIFISH V6 Plus creates a new way of underwater operations. V6 PLUS brings the possibility and reliability for you to perform all advanced underwater tasks.



6000 Lumen LED



Q-IF Multifunctional
Extension Interface



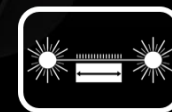
Smart Collision
Avoidance



Distance Lock



Altitude Lock



AR Laser Scaler



SD Card Quick Plug

SPECS COMPARISON

	Brand	FIFISH Pro	D**p T*****	B*****	B*****	C*****
	Product Name	V6 Plus	D**3 S****	B**e R***	P**	M* P**
ROV	Picture					
	Dimension	383 mm × 331 mm × 158 mm	480 mm × 267 mm × 165mm	457mm × 338mm × 254mm	485 mm × 257 mm × 354 mm	480 mm × 267 mm × 165mm
	Brightness (LM)	6000	1000	1000	3300	4000
	Depth Rating (in Meters)	150	200	100	150	150
	Weight (in kg)	5.0 kg	8.5 kg	11 kg	9.0kg	6.0kg
	Battery Life	4-8 hours (156Wh) Quick Charge 0-70%	8 hours Quick Charge 0-80%	3 hours(266Wh) Quick Charge 0-30%	2-5 hours(96Wh) Quick Charge 0-50%	2.5-5 hours(300Wh/700Wh) Quick Charge 0-50%
Smart Features	AR Scaler	√	×	×	×	×
	Laser Ruler	√	×	×	×	×
	Sonar Array Distance Lock, Altitude Lock	√	×	×	×	×
	Smart Collision Avoidance)	√	×	×	×	×
	VR Head Tracking	√	×	×	×	×
	True 360° Omni Directional Movement	√	×	×	×	×

SPECS COMPARISON

	Brand	FIFISH Pro	D**p T*****	B*****	B*****	C*****
	Product Name	V6 Plus	D**3 S****	B**e R***	P**	M* P**
	Picture					
Special Features	Enhanced Auto Pilot (Programable)	√	×	×	×	×
	Auto Motor Maintenance Program	√	×	×	×	×
	Extension Interface	√	√	√	√	√
	LIVE-Broad Casting	√	×	×	×	√
	Thruster Propellers Aluminum Alloy Anodized	√	×	×	×	×
	Underwater Position System (U-QPS)	√	×	×	×	×
Optional Accessories	Robotic Arm System	√	√	√	×	√
	Underwater Retrieval Hook	√	×	×	×	×
	Controllable Camera	√	√	√	×	×
	Thruster Protective Cover	√	×	×	×	×
	Automatic Spool	√	×	×	×	√
	Water Sampler	√	√	×	×	×
	USBL or Underwater GPS	√	√	√	√	√

UNIQUE TECHNOLOGY

1

Hydro dynamic design

Perfect fluid design, simulation, verification system.

2

Omni directional autonomous control system

Precise control in any situation.

3

Power and propulsion system

Independent research and development of small sand-proof, waterproof and corrosion-proof propeller.

4

Underwater image and identification system

The video performs the bottom-level pixel restoration to realize the clarity restoration of the turbid water body.

5

Underwater communication and intelligent positioning system

To achieve underwater communication and intelligent underwater positioning.

6

Intelligent sonar array and AR/VR fusion

Forward distance locking and downward altitude locking, AR ruler and VR head tracking combination.





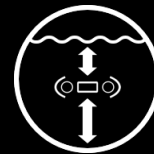
FIFISH
UNDERWATER ROBOT

SONAR ARRAY DISTANCE LOCK, ALTITUDE LOCK

The distance lock and altitude lock sonar system measure the forward distance and the downward altitude in real time. Through **distance lock** and **altitude lock**, the difficulty of operation is reduced, and various inspections are more efficient and accurate.



Distance lock



Altitude Lock



Smart collision
avoidance



Terrain scan



FIFISH
UNDERWATER ROBOT



UNDERWATER QUICK POSITIONING SYSTEM

FIFISH PRO V6 PLUS underwater quick positioning system (**U-QPS**) assists the pilot with the real-time location.





FIFISH
UNDERWATER ROBOT



True 360°

EASY TO FOLLOW, FREE TO TAKE

FIFISH PRO V6 PLUS has **6 degrees of freedom**. Free like a fish, V6 Plus moves in all directions: **360° rotation**, lateral and tilt. When moving in any direction, the **posture lock** can ensure the angle of the drone.



Omni-directional



Posture Lock

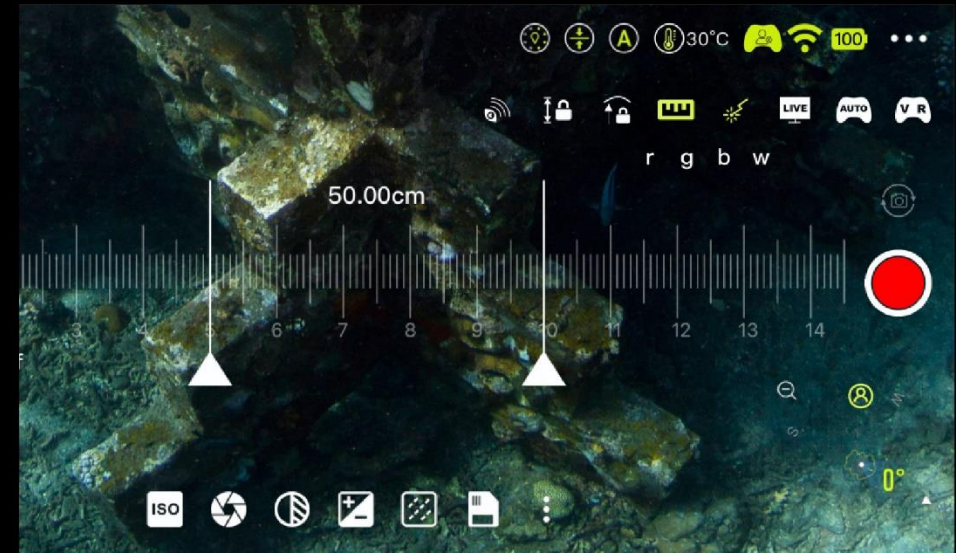
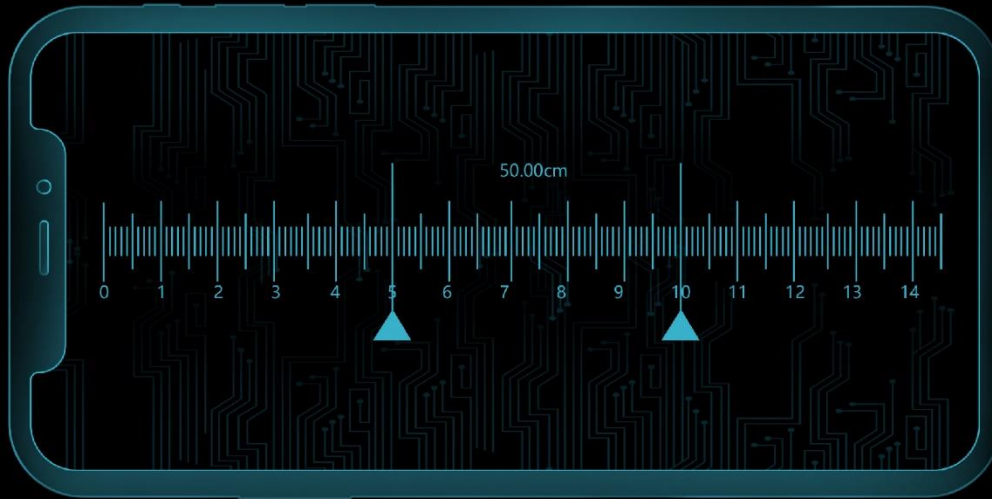


Depth lock

AR SCALER

AR scaler - based on machine vision

QYSEA patent AR scaler's precision is up to 1cm. Self-adaptive measurement and visualized data are visible on FIFISH APP. By moving the scaler and customizing color of scaler, with one simple click you can save the measuring result.





LASER RULER

Laser ruler - based on traditional
laser measurement

VR HEAD TRACKING

VR Head tracking intelligent technology is QYSEA patent design which can let user fully immersive into underwater world. With the Head Tracking feature, put yourself into the drone's first-person-view and control where you want to go simply by turning your head.



4K LOW NOISE SHOOTING, 6000 LUMENS HIGH BRIGHTNESS

6000 lumens super light, equipped with 4K ultra-high-definition camera lens, dark underwater bright as day, presenting high-definition image content.



Light off



Light on



166° FOV
Wide-Angle Lens



240 frames per
second in slow motion



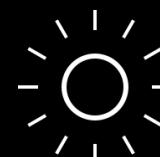
4K UHD Camera



DNG Format



12MP



6000 lumen LED



5500K Color
Temperature



Aperture F/2.5

A NEW GENERATION OF **Q MOTOR POWER SYSTEM**, FULLY UPGRADED

Using QYSEA Technology's "close loop enhanced stabilization algorithm", adaptively adjust the power curve according to the external interference environment, so that the ROV shooting image is more stable, just like an underwater gimbal. Install metal propeller, industrial quality and durable.



QUICK DATA TRANSFER AND STORE

The SD card is **removable**, and all data is instantly exported. The SD card comes standard with 128GB, and can support up to **512GB**.





Robotic Arm



Water Quality
Sample



Water Quality
Detector



Q-Camera



USBL



Underwater GPS

INTERFACE EXPANSION, UNLIMITED APPLICATION

The **Q-IF** interface is matched with the excellent conformal accessory bracket design, which can quickly mount the equipment according to the demand, and realize the rapid switching of multiple scenarios and multiple tasks.



BREAKING BOUNDARIES, INDUSTRY-LEVEL ROV DEEPWATER OPERATIONS

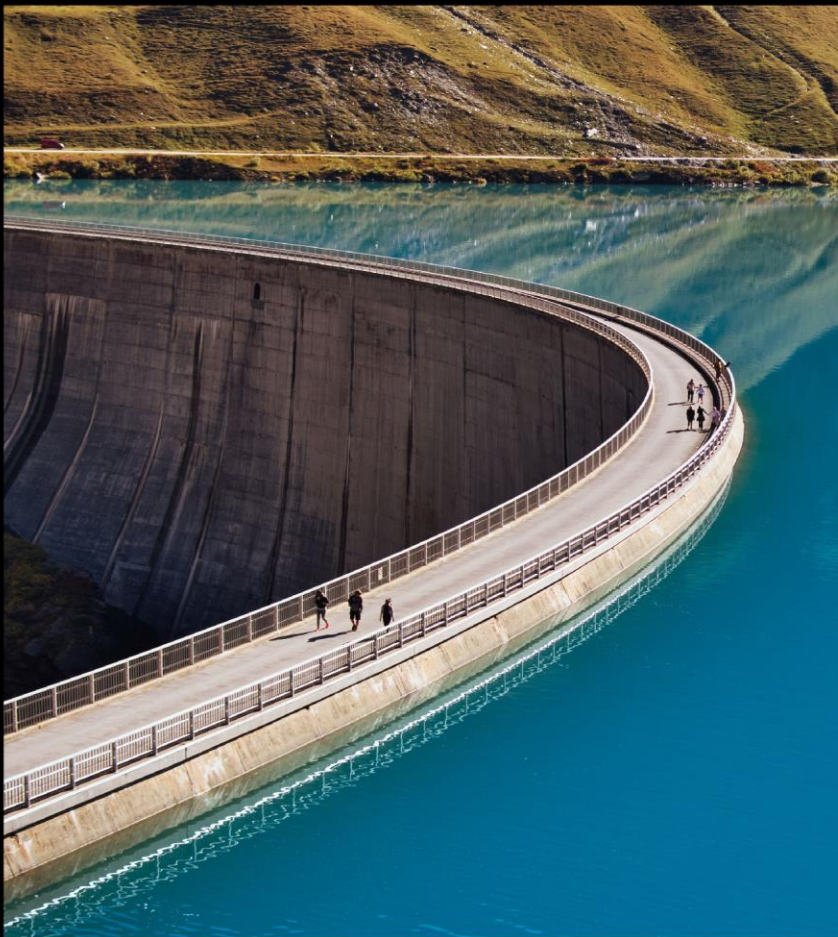
The weight of the ROV is **5KG**, and the maximum diving depth is **150M**. It is dexterous and efficient, and can carry out long time underwater operations without hassle.



EASY TO FOLLOW, FREE TO TAKE

The standard industrial case is very convenient and quick to take and operate at anytime, anywhere. The standard **200 meter** tether reel configuration meets the needs of many aspects from small to large-scale underwater tasks.

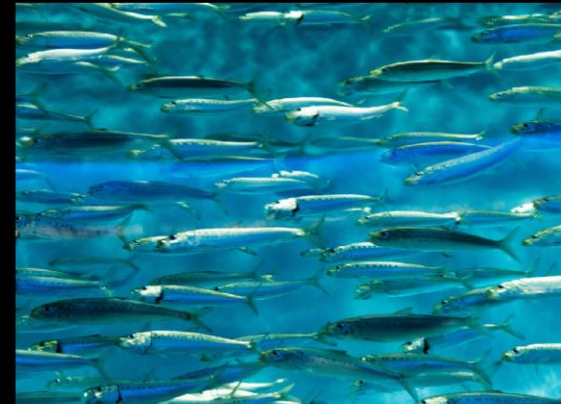
APPLICATION SCENARIO



Water conservancy and hydropower plant inspection



Bridge inspection



Aquaculture



Underwater pipeline inspection



Ship maintenance



FIFISH
UNDERWATER ROBOT



FIFISH PRO VE PLUS



**THANK YOU FOR
WATCHING**

More Info and Inquiries

Tel: +86-755-2266-2313 Email: partner@qysea.com