

# FIFISH E-GO

Easy Go, Just Dive



Professional

Next-generation Solution For Advanced Underwater Operations





# FIFISH E-GO

## Professional-class Underwater Operational Robot

- AI Vision Station Lock
- 4K UHD & 176° FOV Camera Lens
- 10,000 Lumen LED Lights 160° Beam Angle
- 360° Omnidirectional Movement
- Dual Swappable Battery System
- Dual-load Q-interface Ports 3.0
- Modular Quick-release Design
- Powerful & Durable Ring-Wing Motors

## FIFISH E-GO

### Elite & Aesthetic Underwater Robot

The brand new FIFISH E-GO features a sleek and curved exterior inspired by the hammerhead shark, providing the E-GO with exceptional resistance to underwater currents.

### Fluid & Dynamic Design

With its biomimetic shark tail fin design and streamlined fluid dynamics, the FIFISH E-GO effortlessly maneuvers through underwater operations, smoothly navigating the oceans and currents.



### Advanced Power & Propulsion

FIFISH E-GO's ring-wing design, equipped with rugged aluminum alloy propellers, delivers twice the power and stability than previous generations.

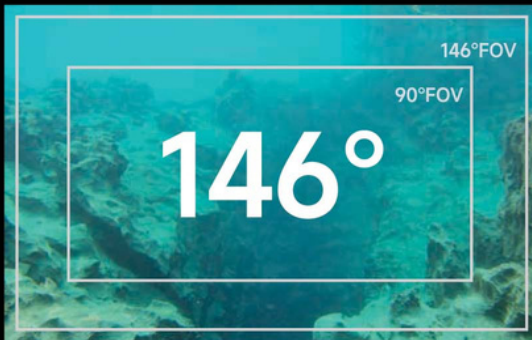
### Omnidirectional & Flexible Underwater Movement

FIFISH E-GO has 360° omnidirectional movement and hovering capabilities, enabling the robot to carry out underwater tasks with complete freedom and flexibility.



## Ultra-wide Field of Vision, See Beyond Limits

The E-GO is equipped with a 176° ultra-wide-angle camera lens, achieving an industry-leading 146° field-of-view underwater.



## Achieve Extreme Close-ups

FIFISH E-GO has a macro focus range of 10cm, allowing for close observation of targets and capturing clear details underwater.



## AI Vision-Station-Lock

FIFISH E-GO's AI Vision-Station-Lock and hovering function enables intuitive one-touch target locking and stable hovering against currents, giving more flexibility and freedom to focus on your underwater operations.



## AI Plankton Filtering Algorithm

Derived from a self-developed AI plankton filtering algorithm and system, FIFISH E-GO possesses robust imaging capabilities to filter underwater images and restore clear visibility.



## Illuminate Your Pathway

FIFISH E-GO is equipped with a powerful 10,000-lumen LED lighting system, delivering vibrancy and clarity to your underwater environments.



## Ultra-wide Brightness Range

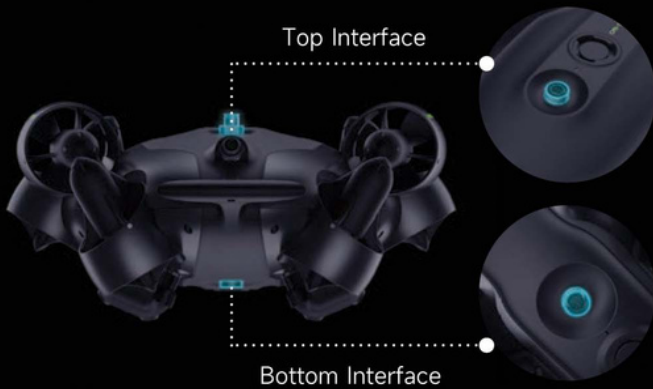
FIFISH E-GO provides a wide illumination range of 160°, enabling a broader field of view across your underwater explorations and operations.





## Dual Attachment Ports, Elevated Capability

By redesigning the structure and build of the E-GO, the robot can be equipped with dual payload interfaces, called Q-Interface 3.0, allowing for the simultaneous use of up to two professional add-on tools.



## Quick-release Design & Components

Newly-upgraded quick installation and removal of components and devices, with attachment and detachment speeds of up to 3 seconds, greatly improve the operational efficiency of users.



## Highly Modular Functions

The new motor quick-release module enables fast installation and removal of components, allowing for immediate recovery to full operational status and readiness for the task at hand.

E-GO's versatile modular design supports quick replacement of light sources and imaging modules, among other features. Even in the event of light or camera malfunctions during underwater operations, spare parts can be quickly installed and removed to ensure smooth progress and successful completion of the mission.



## Instant Battery Replacement

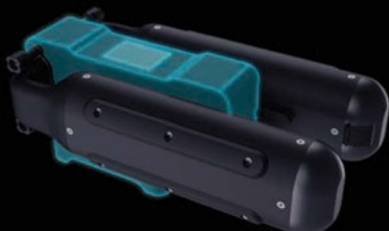
FIFISH has introduced an all-new swappable design for its power source, allowing the E-GO to replace batteries instantly without prolonged delays, restoring the robot to full power capacity in seconds.

Additionally, the quick-release structure has been upgraded with waterproof, pressure-resistant, and corrosion-resistant connectors, enabling rapid battery replacement with safety and peace of mind.



## Battery Manager, Worry-free Operation\*

Paired with the Q-Energy Station battery fast-charging supply station, concerns about low power and short battery life are alleviated, making it perfectly suitable for long-duration underwater operations.



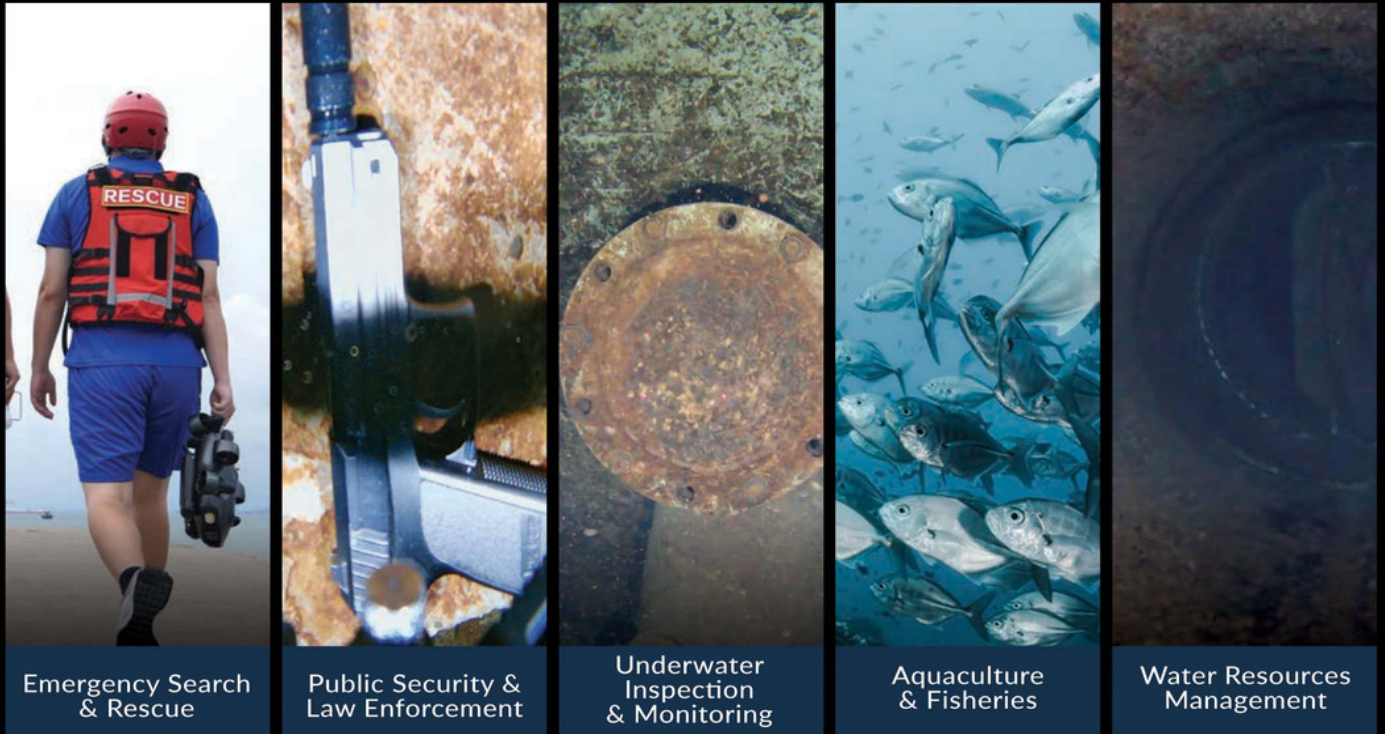
## Efficient Data Transfer

The robot is equipped with a built-in Micro SD card slot, allowing for quick transfer of films and images. It also supports intelligent monitoring for leak detection.



\*Note: The Q-Energy Station battery fast-charging supply station is an optional accessory and needs to be purchased separately or as part of a package.

# Application Scenarios



## Powerful Accessories, Limitless Capabilities

FIFISH E-GO supports the expansion and simultaneous use of multiple accessories, enabling more efficient, precise, and secure operations to meet the diverse requirements of the marine industry.





# FIFISH E-GO Specifications



## ROV

Dimension	430mm x 345mm x 170mm
Weight	5.1kg
Number of Propellers	6 (FIFISH Ring-Wing Motors)
Maneuverability	6 DOF (Degree of Freedom)
	Moving: left & right, up & down, forward & backward
	Rotation: 360° yaw, 360° pitch, 360° roll
Posture Lock™	± 0.1° pitch angle or ± 0.1° roll angle and moving in any direction
Depth Holding	Suspending in ± 1 cm
Depth Rating	100 m (328 ft)
Operating Temp.	-10 °C ~ 50 °C
Battery	Operating Time: 2.5 hours (may vary depending on working conditions)*
	72Wh*2
	Number of Batteries: 2
	Swappable Battery: Supports quick replacement (Without shutting down machine)
	Smart battery management and detection
	Fast Charging: 90% in 1 hour

## LED Beams

Brightness	5000 lumen*2
CCT	5500 K
Beam Angle	160°

## Motor

Motor Type	Bionic Ring
Number of Wings	6 Propeller
Blade Material	Hard Anodized Aluminum Alloy

## Charger

ROV	Input: 100-240 V, 50/60 Hz, 2.5 A MAX
	Output: 18V = 10A
RC	Input: 100-240 V, 50/60 Hz, 0.5 A MAX
	Output: 5V = 3A, DC

## Port Interface

Quantity	2 Ports (Expandable to 6 Ports)
Interface (Upper)	11V-24V@5A ETHERNET,UART
Interface (Lower)	12V@5A ETHERNET,UART
Adjustable power	Adaptive voltage range for external accessories
Secure plug	Self-diagnostic tests, leakage prevention

\* Note: The \* data is obtained from FIFISH E-GO operating under standard intermittent detection tasks at a static water environment until the remaining battery level reaches 0%. The actual endurance may vary depending on the water environment and is for reference only.

## Camera

Sensor	1/1.8"
Effective Pixels	8M
Aperture	f/2.5
FOV (Underwater)	H: 120°
	V: 70°
	D: 146°
Focus Range	0.1m to infinity
ISO	Auto, 100, 150, 200, 300, 400, 600, 800, 1600, 3200, 6400
White Balance	2500K, 2700K, 3000K, 3500K, 4000K, 5000K, 5500K, 6000K, 7000K, 8000K
Exposure Compensation	Auto, +3,+2,+1,0,-1,-2,-3
Photo Resolution	3840*2160
Photo Format	JPEG, DNG
Video Resolution	4K30fps (H.264) 4K25fps (H.264 / H.265)
	1080p120/100fps 1080p60/50fps 1080p30/25fps
	720p180/150fps 720p120/100fps 720p90/75fps 720p60/50fps
Video Encode	H.264, H.265
Stabilization	Electronic Stabilization
Color System	NTSC & PAL
Internal Storage	External, expandable up to 256GB (standard 128GB)
Camera Function	AI Vision Station Lock

## Remote Controller

Wireless Network	5GHz WiFi, 11a,n.ac
Battery Usage Time	Greater than 4 hours
File Download Format	FAT32&EXFAT (maximum storage support of 256GB)
HDMI Output	Requires QYSEA HDMI BOX for connection

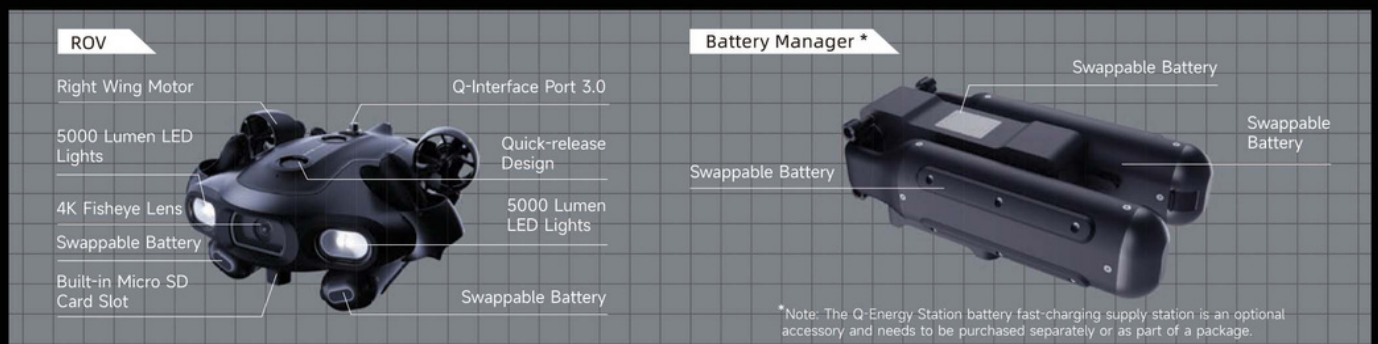
## Robotic Arm+Parallel Gripper (Optional)

Size	140mm
Grip	10kgf
Power Supply Voltage	9-12V
Maximum Current	3A

## Tether & Spool

Cable length	200 meters
Tensile strength	130kgf
Cable diameter	4.0mm
Underwater weight	Neutral buoyancy
Waterproof rating	IP67

## Components



UK & IRELAND DISTRIBUTOR

**mantsbrite**  
marine electronics

TEL: 01621 853003  
sales@mantsbrite.com  
www.fifish.co.uk

